

Building GUIs with WindowBuilder

EclipseCon 2012

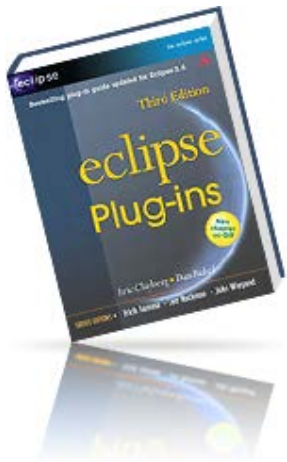
March 28, 2012

Eric Clayberg
Software Engineering Manager
Google, Inc.
clayberg@google.com





Eric Clayberg

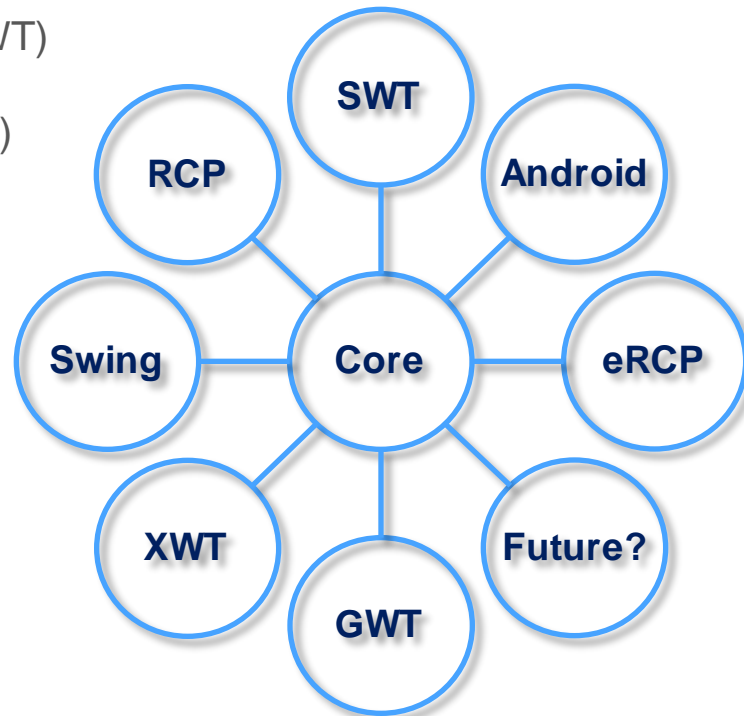
- Software Engineering Manager for Google Web Toolkit (GWT) & Dart Editor
- Former V.P. of Product Development for Instantiations
- Used Java in 1996; Eclipse since 2000
- Co-author of *Eclipse Plug-ins* and *Eclipse Graphical Editing Framework (GEF)*
- Project manager & architect of VA Assist Enterprise, CodePro, WindowBuilder and over a dozen other commercial software products
- Project Lead for Eclipse.org WindowBuilder project
- Contact at clayberg@google.com



WindowBuilder has a very long history spanning multiple technologies and companies

- | | | | | | |
|--------------|---------|---|--|-----------|--|
| Smalltalk | • 1991 | Original release for Smalltalk/V by Cooper & Peters |  | Same Team | |
| | • 1993 | VisualSmalltalk release by ObjectShare | | | |
| | • 1994 | VisualAge Smalltalk release by ObjectShare | | | |
| | 1996 | Briefly owned by ParcPlace-Digitalk | | | |
| | • 1997 | VisualAge Smalltalk release by Instantiations | | | |
| Eclipse/Java | • 2003 | New Eclipse/Java version for SWT/RCP (SWT Designer) | | | |
| | • 2004 | Swing support added (Swing Designer) | | | |
| | • 2006 | Google Web Toolkit (GWT) support added (GWT Designer) | | | |
| | • 2009 | Eclipse community award for Best Commercial Add-on |  | | |
| | • 2010 | Acquired by Google and released free to the world | | | |
| | • 2011+ | Contributed to Eclipse.org as new open-source project;
Part of Indigo & Juno release trains (Eclipse 3.7, 3.8 & 4.2) | | | |

- Available now from <http://www.eclipse.org/windowbuilder>
- Composed of WindowBuilder Engine, SWT, eRCP, XWT & Swing Designer
- WindowBuilder Engine provides a rich API for creating UI designers
 - Very modular with dozens of extension points
 - Pluggable support for different languages and parsers
 - Java-based UI frameworks (e.g., Swing, SWT/RCP, eRCP, GWT)
 - XML-based UI frameworks (e.g., XWT, GWT UiBinder, Android)
- Exemplary tool examples:
 - SWT Designer
 - Swing Designer
 - eRCP Designer
 - XWT Designer
- 3rd Party Tools
 - JBuilder Swing Designer
 - GWT Designer
 - Android Designer



“WindowBuilder delivers the kind of GUI building productivity that we used to have before we converted to Java. WindowBuilder not only dramatically improves productivity for design and maintenance, but it also enables us to significantly improve the look-and-feel of our GUIs without costing days of coding. Until discovering WindowBuilder, I had forgotten just how much fun and easy it can be building Java GUIs.”

Sally Rich,
Senior Software Engineer
RSS Solutions Inc

“In 25 years of software development I have used a plethora of development tools. I can honestly say that WindowBuilder is head and shoulders above anything I have used for serious development. The features I particularly like include the bi-directional edit process, the native look and feel of cross platform GUIs and the manner in which component management is greatly simplified. It all adds up to allowing the developer to get on with the process of creating an application rather than worrying about the technology beneath it.”

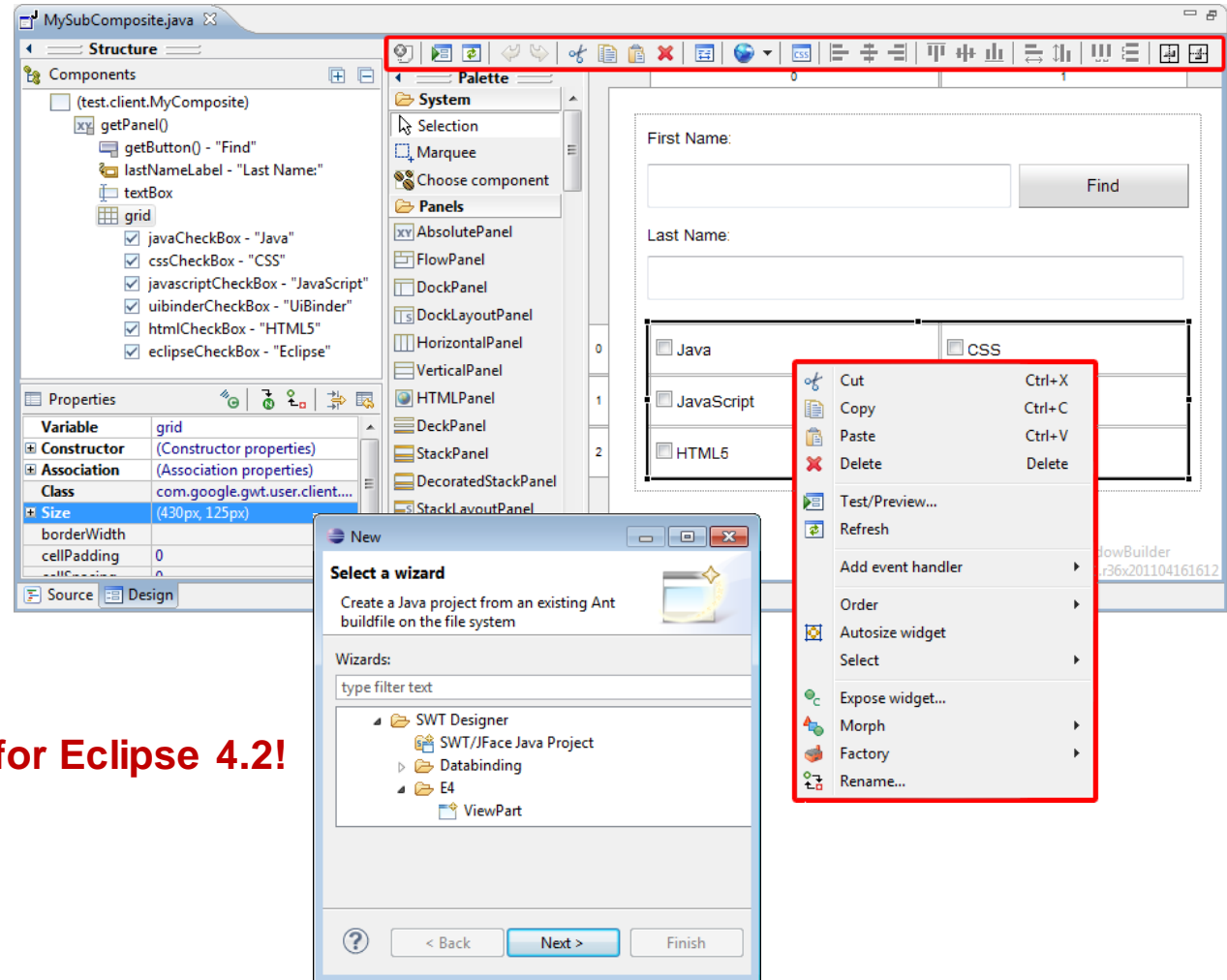
John Bond,
Developer

User Interface



WindowBuilder is composed of the following major components

- Source View
- Design View
- Component Tree
- Property Pane
- Palette
- Wizards
- Toolbars & Context Menus



New e4 ViewPart wizard for Eclipse 4.2!

WindowBuilder supports many state-of-the-art features

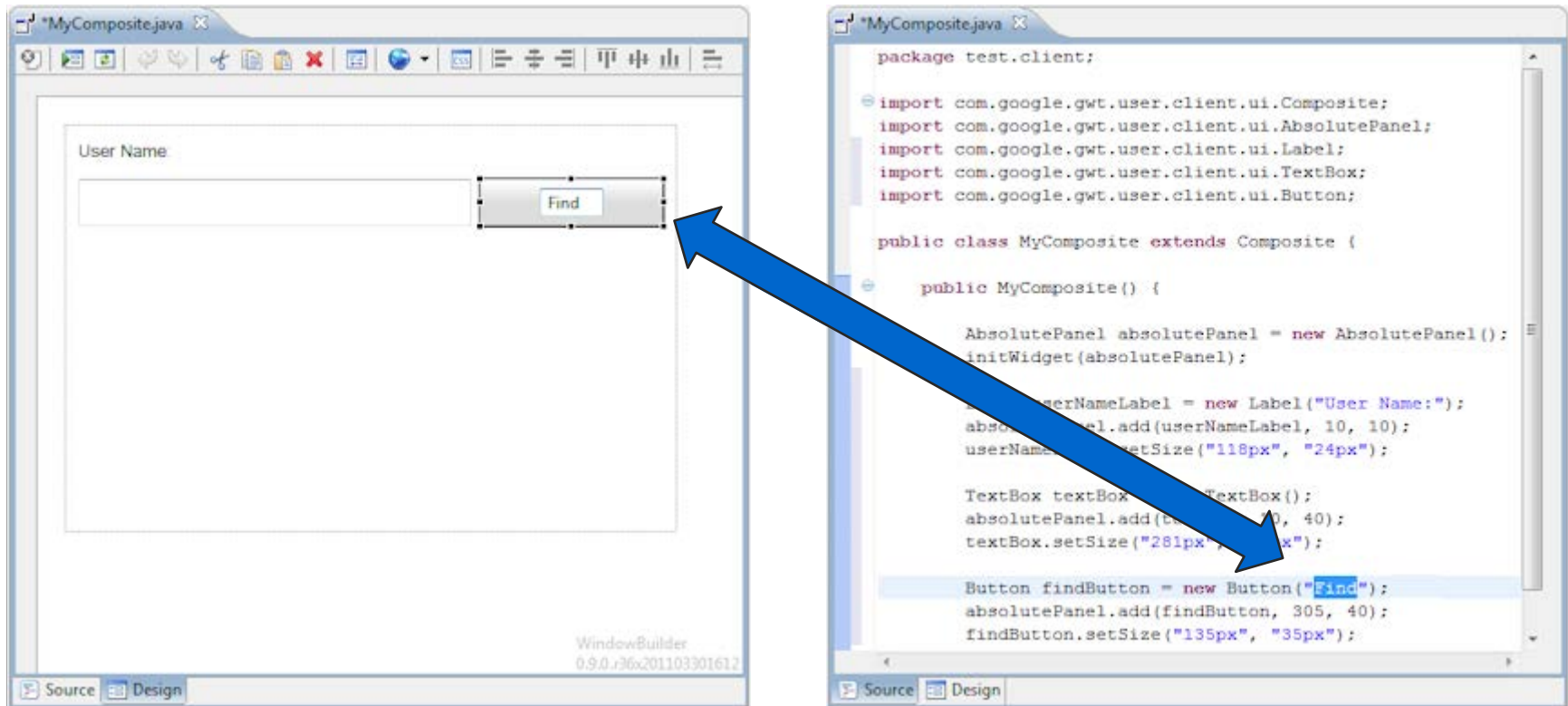
- WYSIWYG & Bi-directional Code Generation
- Powerful & Flexible Code Parser
- Read & Write Any Format or Style
- Internationalization
- Visual Inheritance
- UI Factories
- Morphing
- Widgets & Layout Managers
- Graphical Menu Editing



WYSIWYG & Bi-directional Code Generation



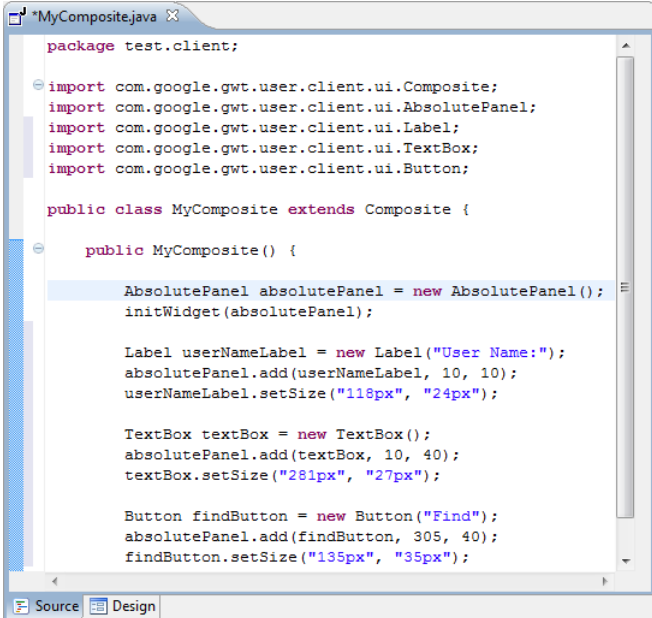
- WYSIWYG editing in design view
- Bi-directional Code Generation
- Micro edits result in smallest possible code change



Powerful & Flexible Code Parser



- Can parse its own code and code written by hand
- No protected code blocks
- Understands data flow
- Ignores & preserves non-UI code
- Refactoring friendly and resilient to hand-made changes
- One-to-one relationship between UI and Java/XML code
- No intermediate metadata file to get lost or out of sync



```
package test.client;

import com.google.gwt.user.client.ui.Composite;
import com.google.gwt.user.client.ui.AbsolutePanel;
import com.google.gwt.user.client.ui.Label;
import com.google.gwt.user.client.ui.TextBox;
import com.google.gwt.user.client.ui.Button;

public class MyComposite extends Composite {

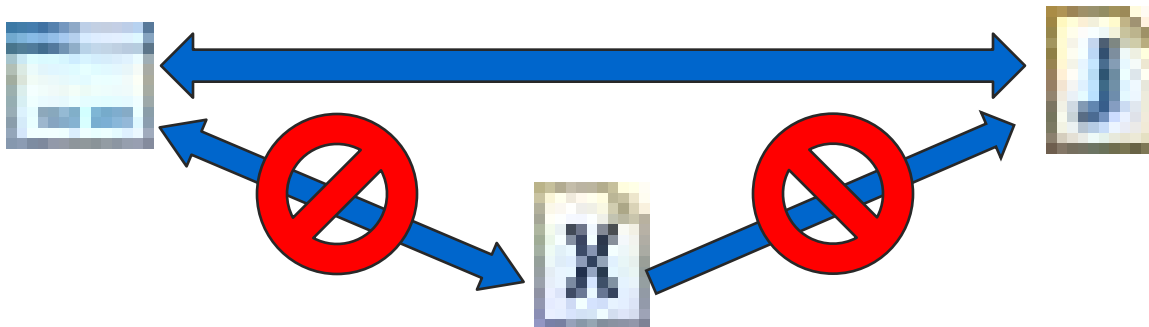
    public MyComposite() {

        AbsolutePanel absolutePanel = new AbsolutePanel();
        initWidget(absolutepanel);

        Label userNameLabel = new Label("User Name:");
        absolutePanel.add(userNameLabel, 10, 10);
        userNameLabel.setSize("118px", "24px");

        TextBox textBox = new TextBox();
        absolutePanel.add(textBox, 10, 40);
        textBox.setSize("281px", "27px");

        Button findButton = new Button("Find");
        absolutePanel.add(findButton, 305, 40);
        findButton.setSize("135px", "35px");
    }
}
```



Read & Write Any Format or Style



Window > Preferences > WindowBuilder > GWT | Swing | SWT > Code Generation

- Local variables vs. Fields
- Flat vs. Block
- Initialized fields
- Lazy declaration

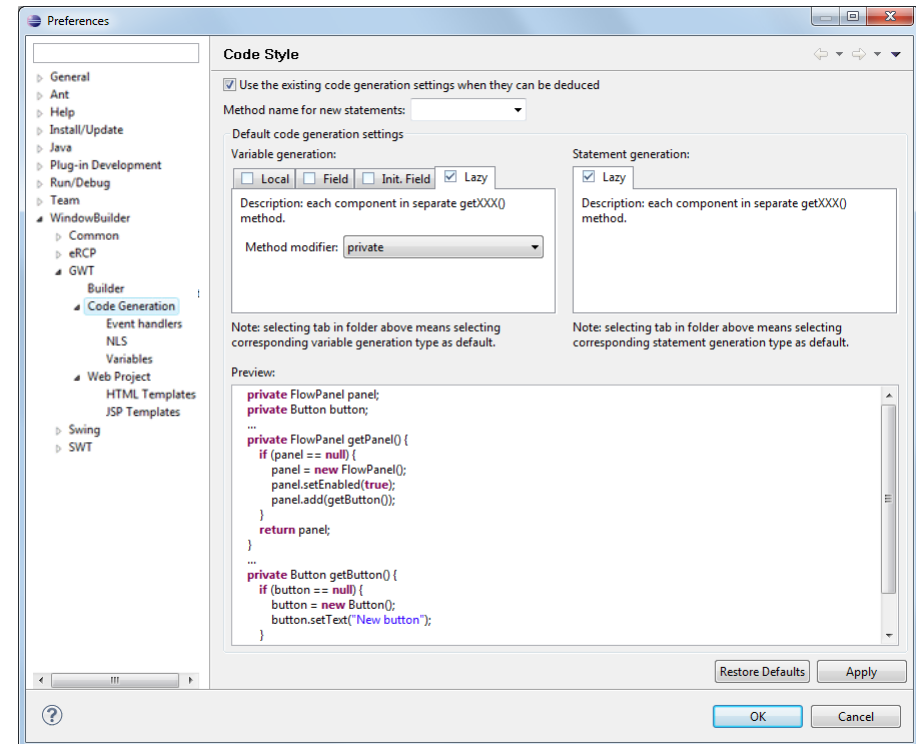
```
...  
FlowPanel panel = new FlowPanel();  
panel.setEnabled(true);  
  
Button button = new Button();  
button.setText("Add customer...");  
panel.add(button);  
...
```

```
{  
    FlowPanel panel = new FlowPanel();  
    panel.setEnabled(true);  
    {  
        Button button = new Button();  
        button.setText("Add customer...");  
        panel.add(button);  
    }  
    ...  
}
```

```
private FlowPanel panel;  
private Button button;  
...  
private FlowPanel getPanel() {  
    if (panel == null) {  
        panel = new FlowPanel();  
        panel.setEnabled(true);  
        panel.add(getButton());  
    }  
    return panel;  
}  
...  
private Button getButton() {  
    if (button == null) {  
        button = new Button();  
        button.setText("New button");  
    }  
    return button;  
}
```

```
private final FlowPanel panel = new FlowPanel();  
private final Button button = new Button();  
...  
panel.setEnabled(true);  
  
panel.add(button);  
button.setText("Add customer...");  
...
```

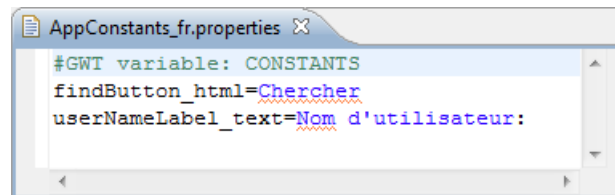
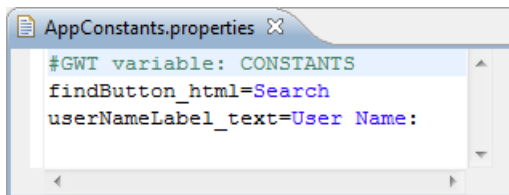
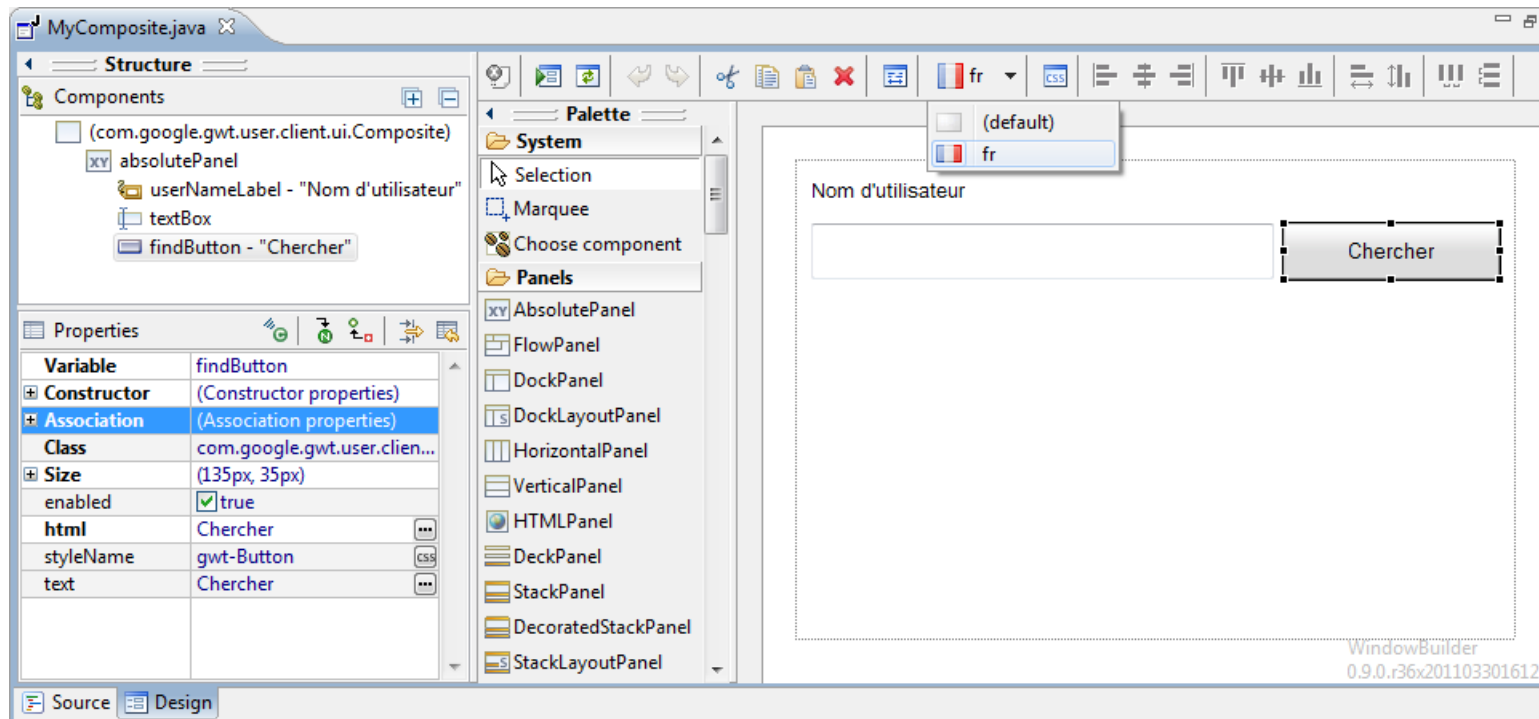
```
private FlowPanel panel;  
private Button button;  
...  
panel = new FlowPanel();  
panel.setEnabled(true);  
  
button = new Button();  
button.setText("Add customer...");  
panel.add(button);  
...
```



Internationalization



Offers easy-to-use Internationalization and Localization tools

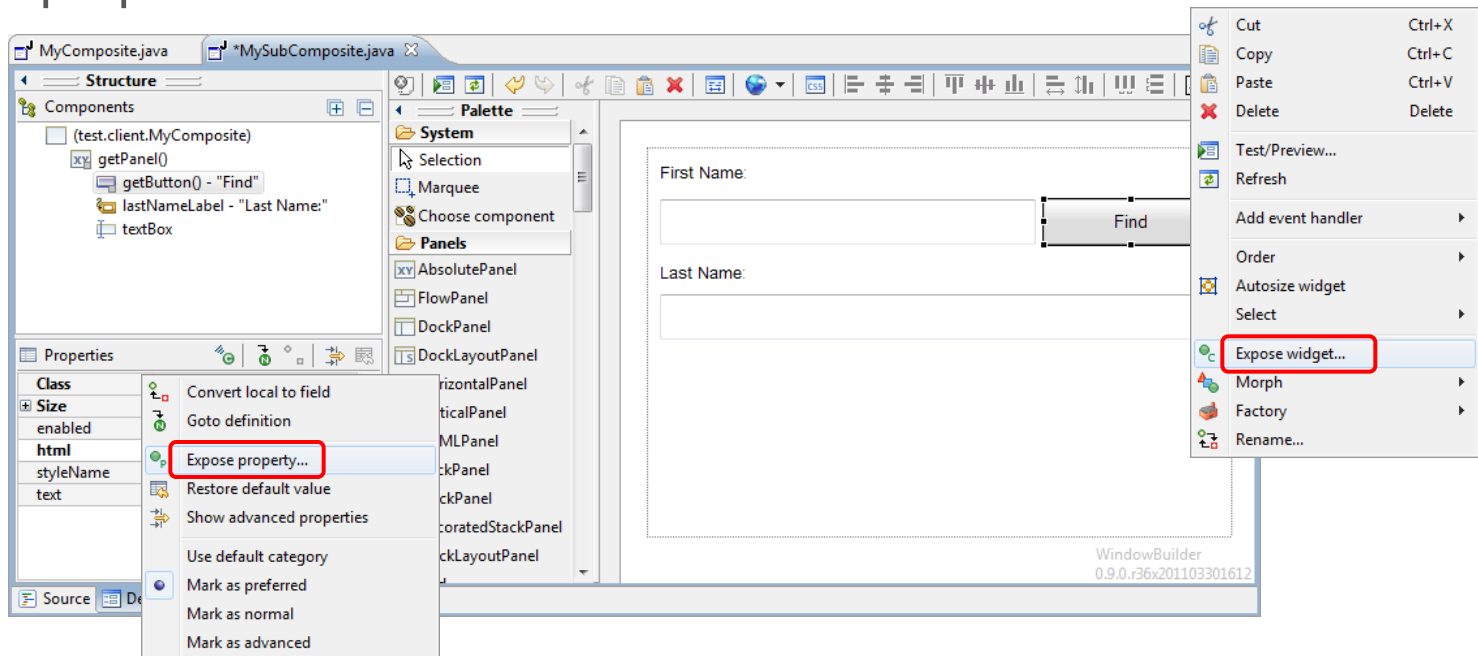


Visual Inheritance

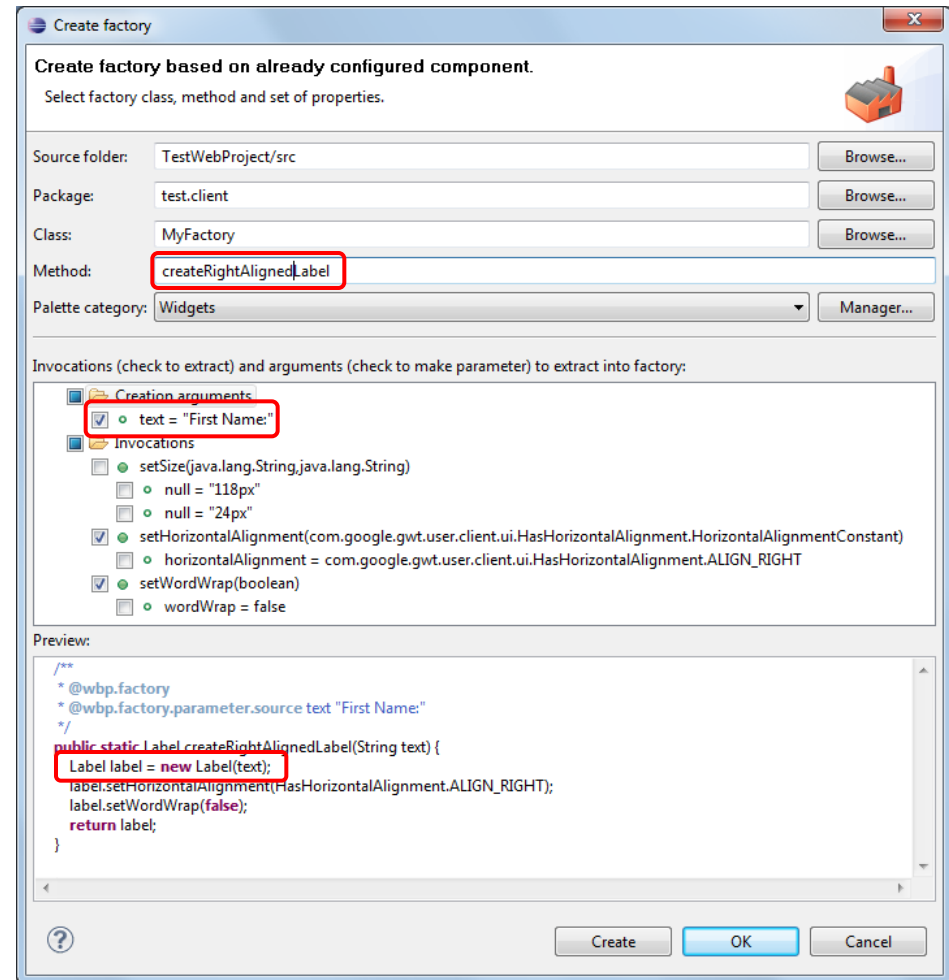
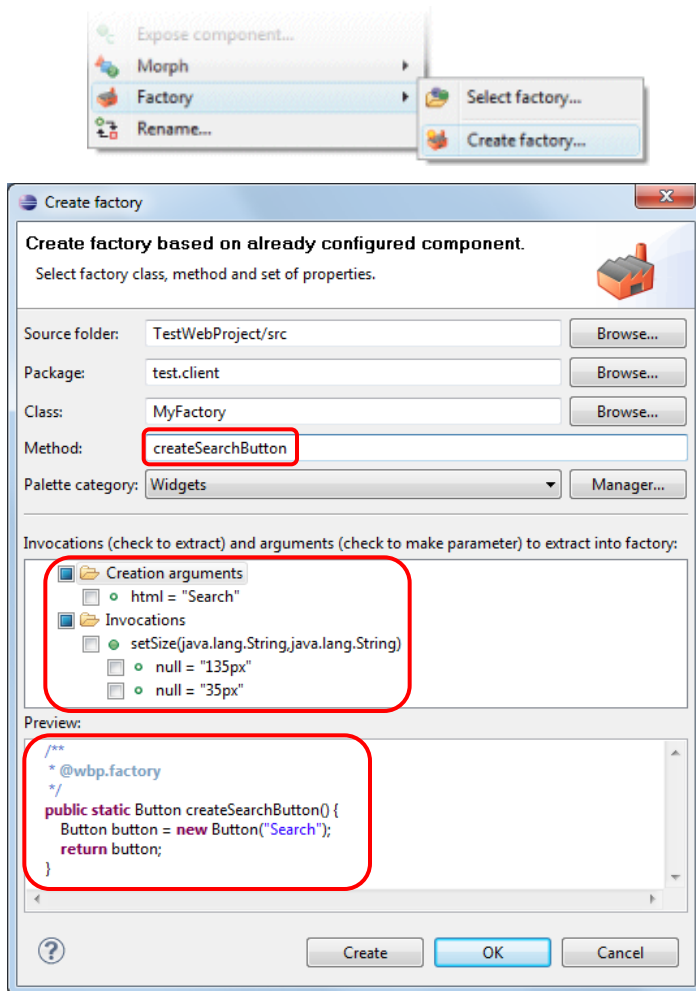


Provides visual inheritance so that code features can be easily inherited from a parent – child hierarchy

- Easily expose fields and properties
- Add components & event handlers to inherited fields
- Change public properties of inherited components
- Change properties of inherited fields



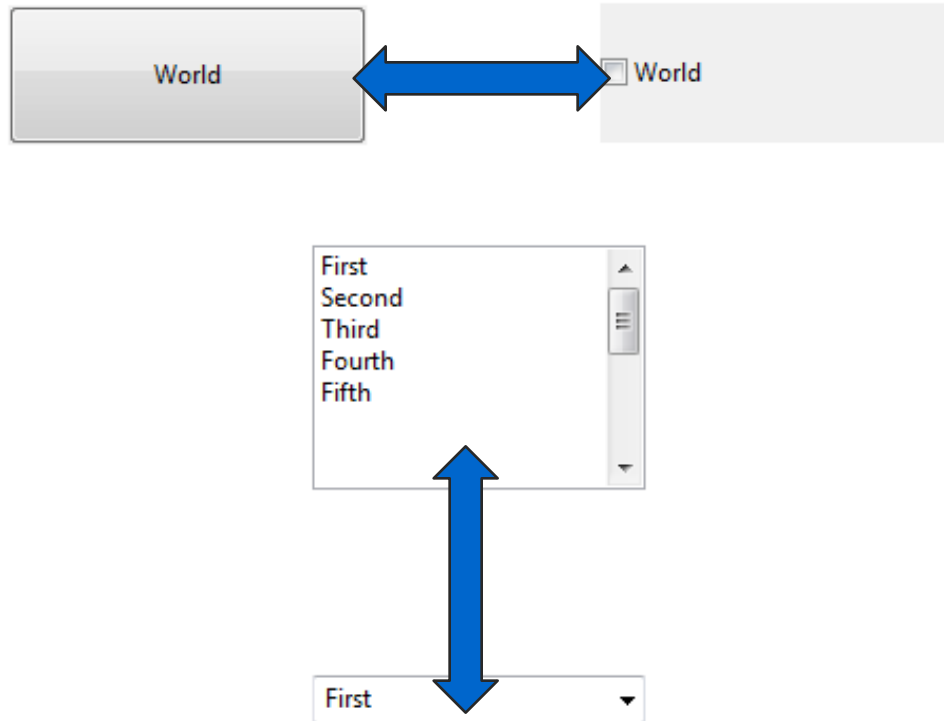
Support for UI Factories and reusable customized GUI elements



Morphing



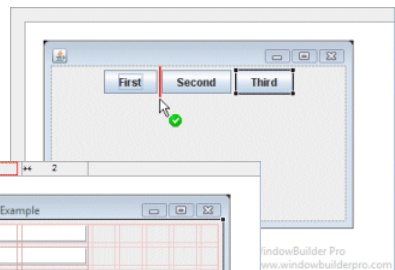
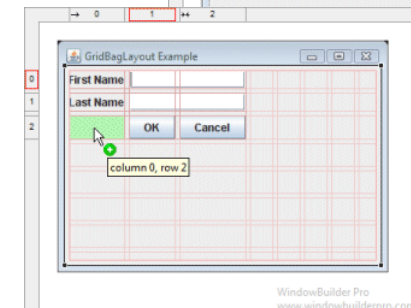
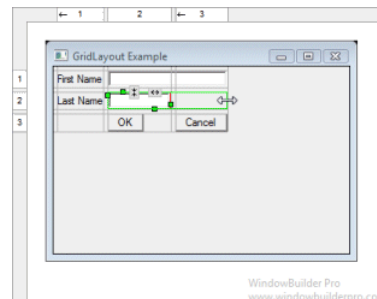
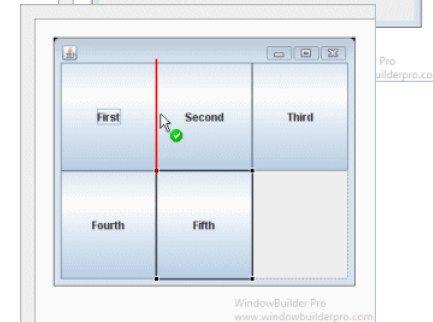
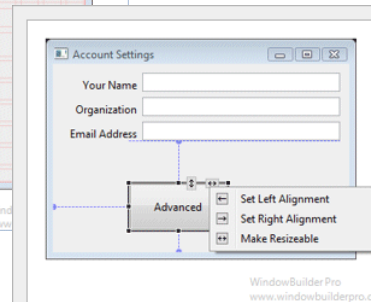
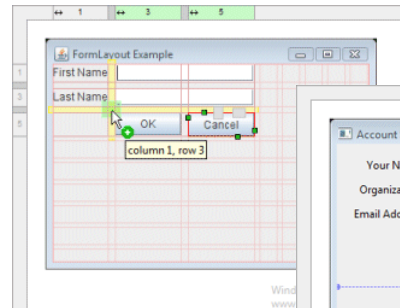
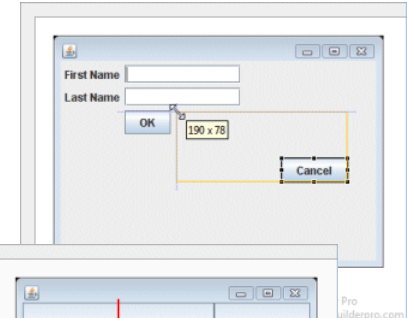
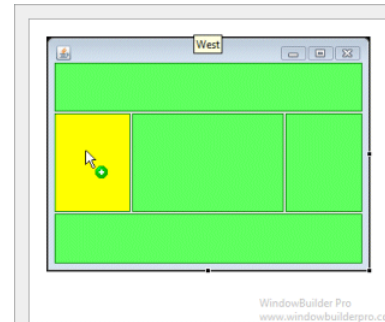
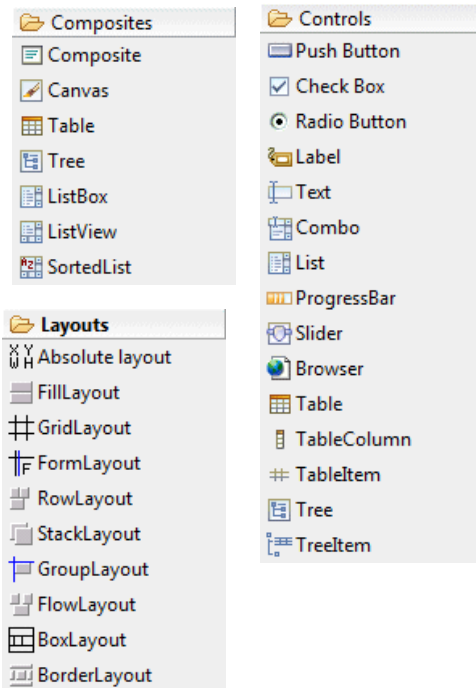
Provides a Morphing tool to easily change one widget type into another



Widgets & Layout Managers



Fully supports all standard widgets and layout managers as well as select third-party widgets and layout managers

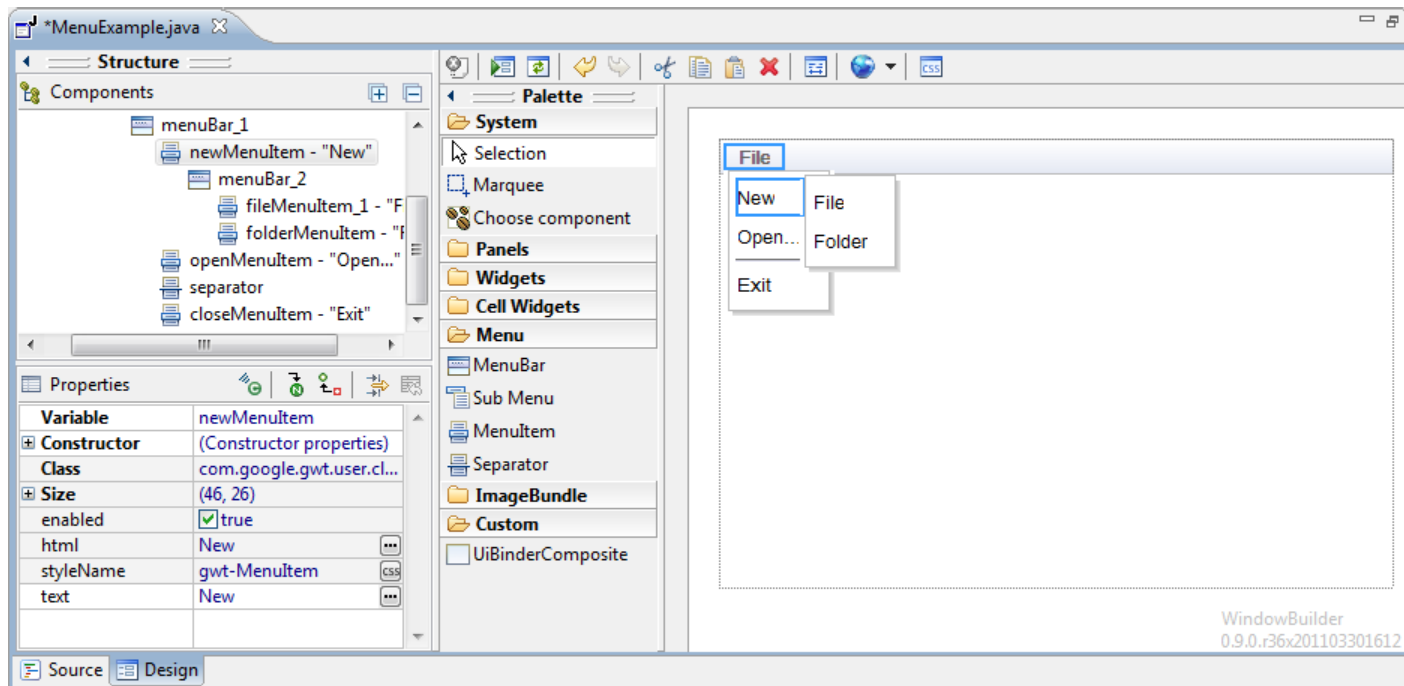
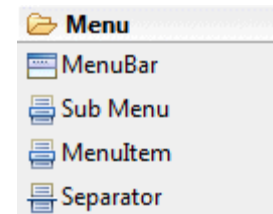


Graphical Menu Editing



Supports WYSIWYG Graphical Menu Editing

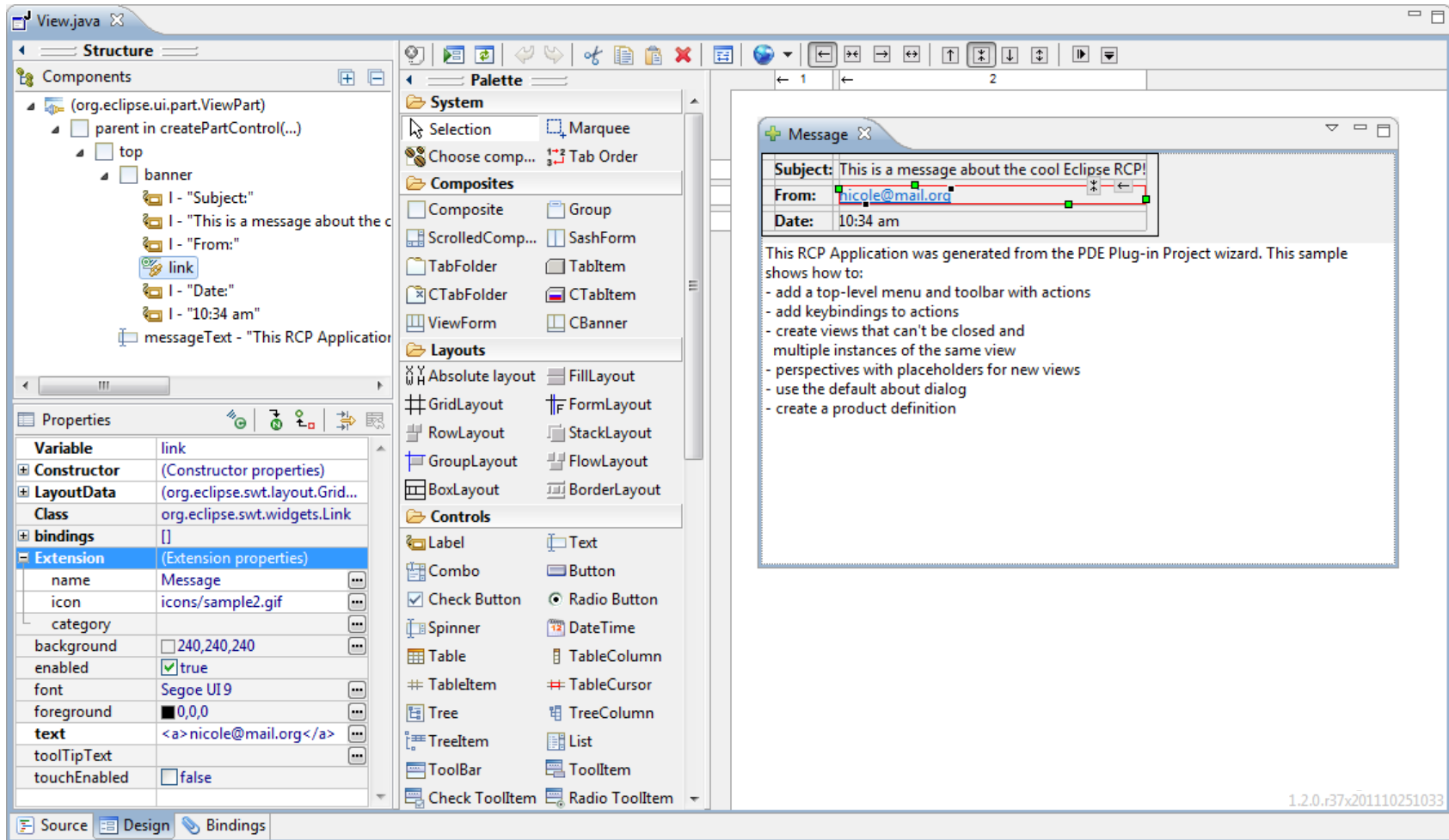
- Graphical edit menubars and menuitems
- Use drag/drop to rearrange menus
- Direct edit menu labels



Gallery – SWT Designer

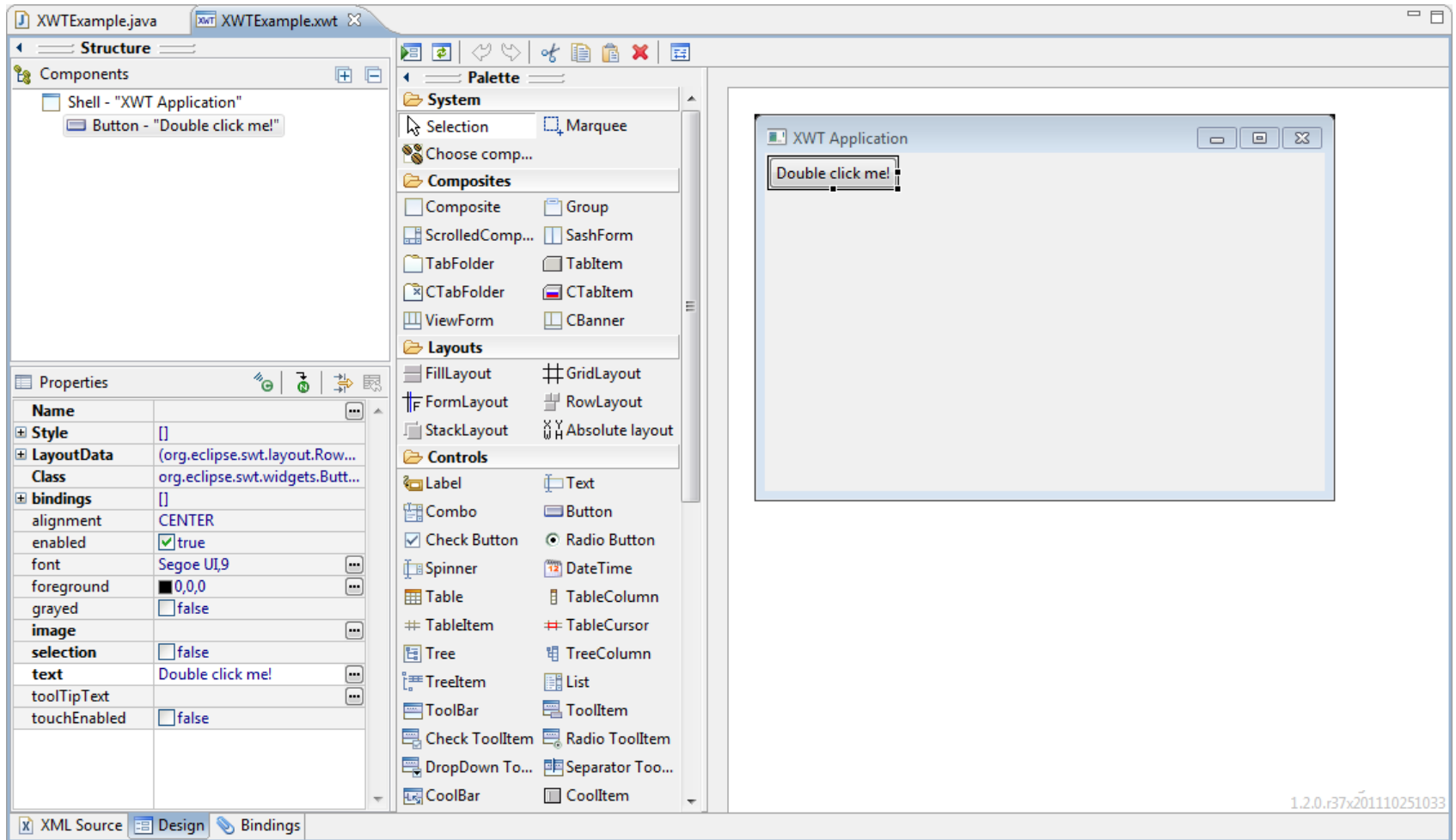


<http://eclipse.org/windowbuilder/>



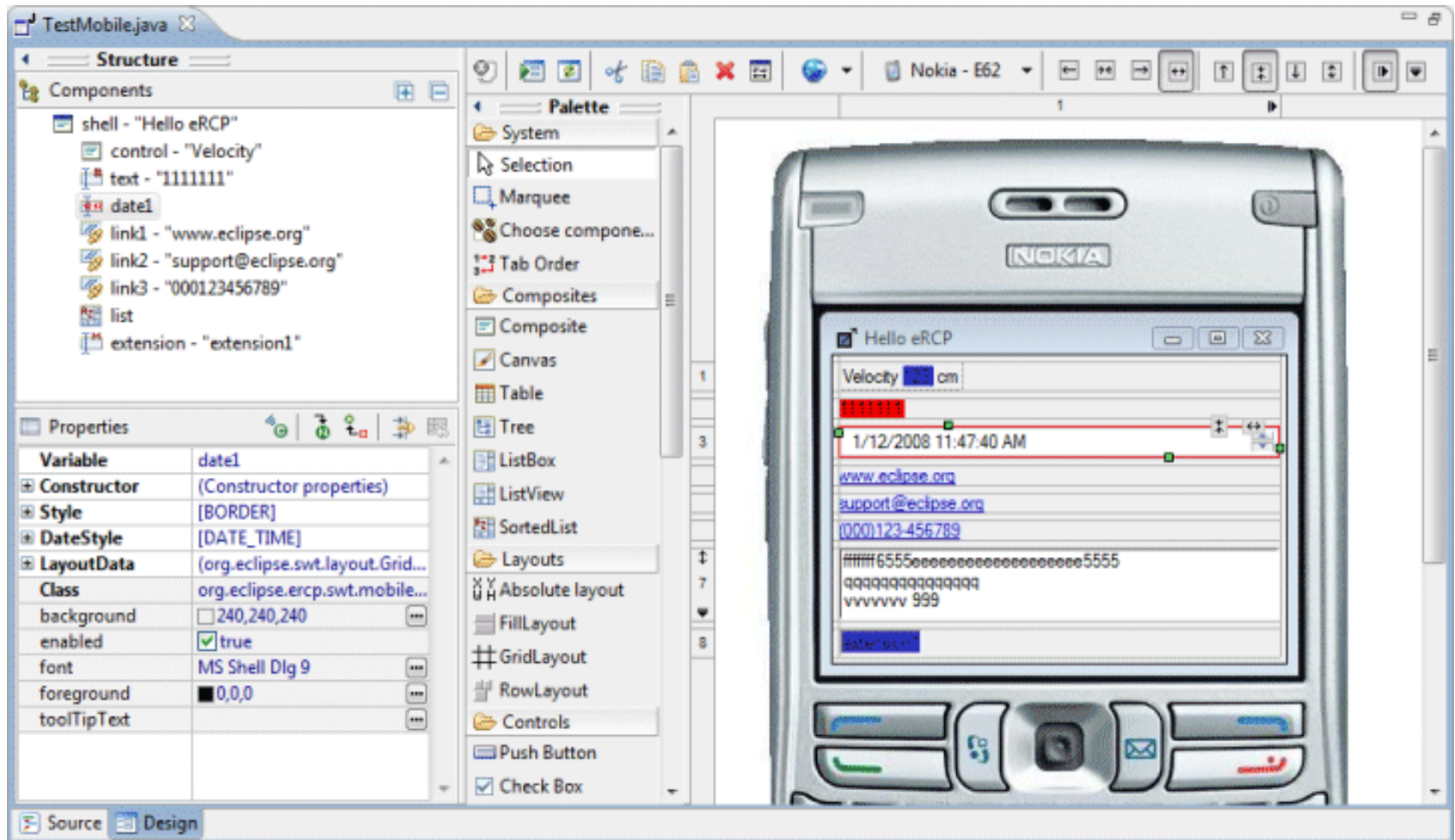
Gallery – XWT Designer

<http://eclipse.org/windowbuilder/>



Gallery – eRCP Designer

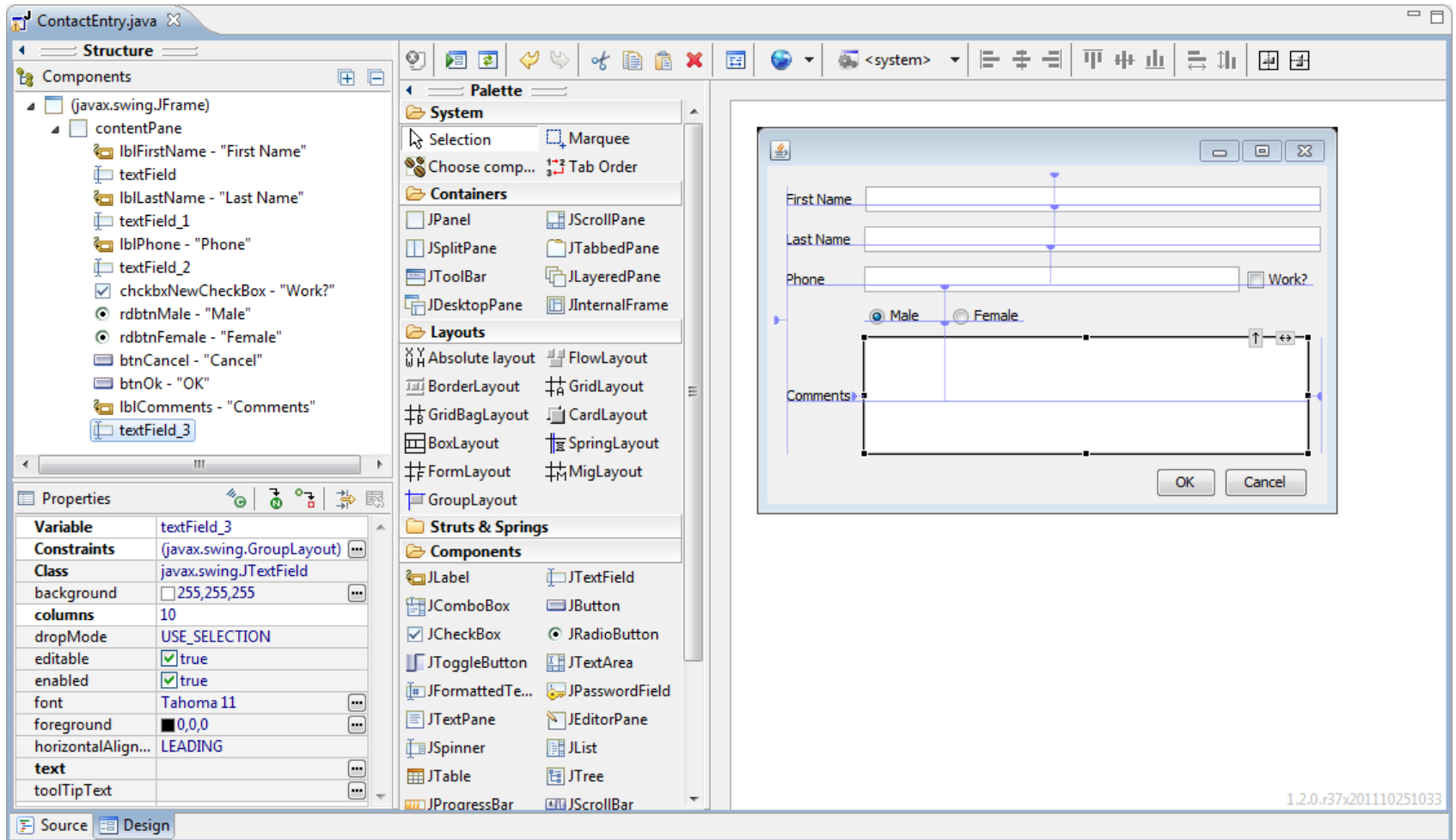
<http://eclipse.org/windowbuilder/>



Gallery – Swing Designer



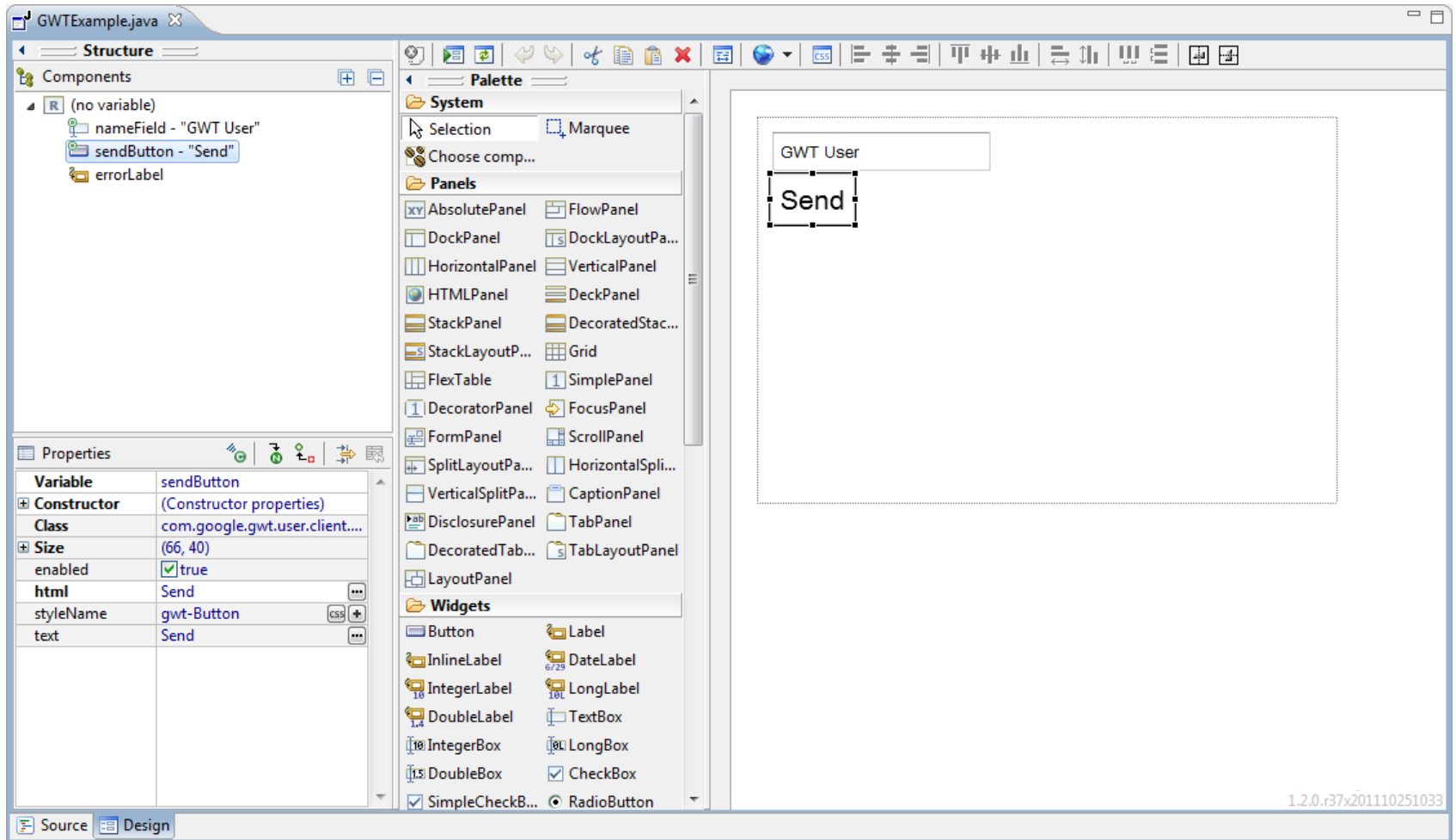
<http://eclipse.org/windowbuilder/>



Gallery – GWT Designer



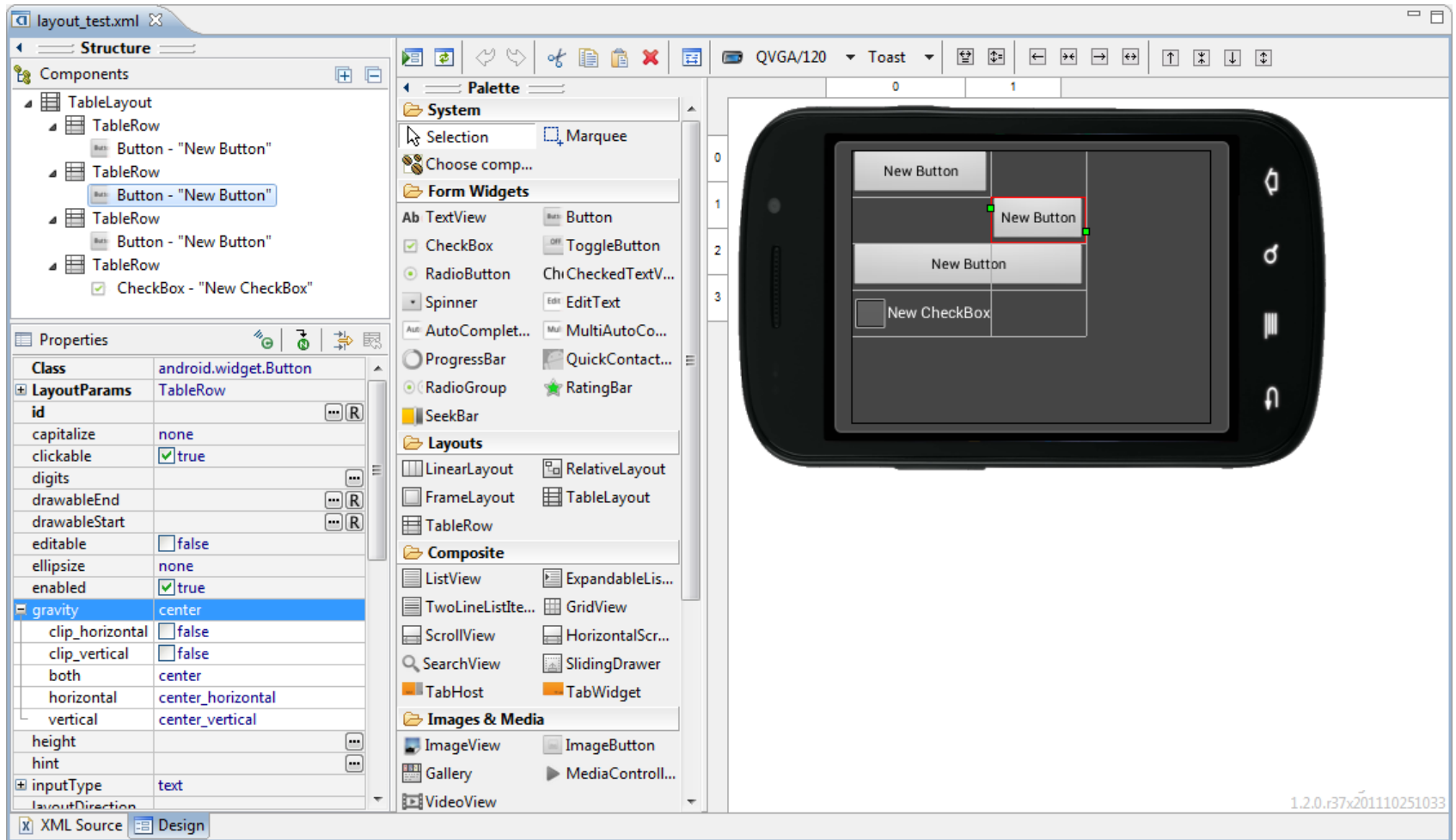
<http://code.google.com/p/gwt-designer/>



Gallery – Android Designer



<http://code.google.com/a/eclipselabs.org/p/android-designer>





Q & A

Don't be shy!

Thank You



Where to get it:

<http://eclipse.org/windowbuilder/download.php>

<https://developers.google.com/java-dev-tools/download>

<https://developers.google.com/web-toolkit/tools/download-gwt designer>

<http://code.google.com/a/eclipselabs.org/p/android-designer/downloads>

Documentation:

<https://developers.google.com/java-dev-tools/wbpro/>

Issue tracker, source:

<https://bugs.eclipse.org/bugs/> → Tools > WindowBuilder

<http://dev.eclipse.org/svnroot/tools/org.eclipse.windowbuilder>

<https://svn.codespot.com/a/eclipselabs.org/windowbuilder-extras/trunk>

Forum:

http://eclipse.org/forums/index.php?t=thread&frm_id=214

